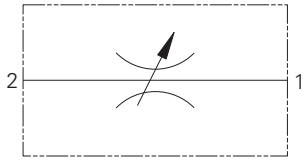


MRV2-10 - Flow Restrictor Valve

Semi-rotary

Up to 57 L/min (15 USgpm) • 210 Bar (3000 psi)



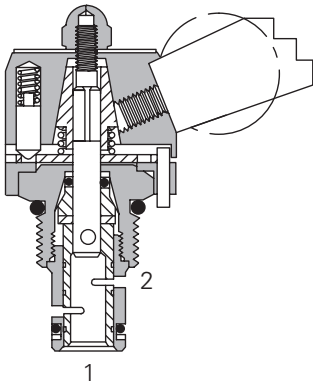
Operation

This valve will increase or decrease flow by changing the variable orifice with the rotary adjustment. Recommended flow path is 2 to 1.

Features

Hardened and ground working components. Cartridge construction for maximum mounting flexibility. Flexible mounting for the handle position, detent available.

Sectional View



Performance Data

Ratings and Specifications

Performance data is typical with fluid at 21,8 cSt (105 SUS) and 49°C (120°F)

Typical application pressure (all ports)	210 bar (3000 psi)	
Rated inlet flow	05 - 0-18,9 L/min	(0-5 USgpm)
	10 - 0-37,8 L/min	(0-10 USgpm)
	15 - 0-56,7 L/min	(0-15 USgpm)
Internal leakage	164 cm ³ /min (10 in ³ /min) maximum 210 bar (3000 psi)	
Temperature range	-40° to 120°C (-40° to 248°F)	
Manual operators	B -	Ball lever (friction lock)*
	E -	Ball lever (10 position detent)*
	D -	Lever (10 position detent)*
	L -	Lever (friction lock)*
	K -	Knob (non-locking)
* Light duty housing only		
Cavity	C-10-2	
Fluids	All general purpose hydraulic fluids such as: MIL-H-5606, SAE 10, SAE 20 etc.	
Filtration	Cleanliness code 18/16/13	
Standard housing material	Aluminum	
Weight cartridge only	0,79 kg (1.74 lbs)	
Seal kit	561810 (Buna-N), 889609 (Viton®)	

Viton is a registered trademark of E.I. DuPont

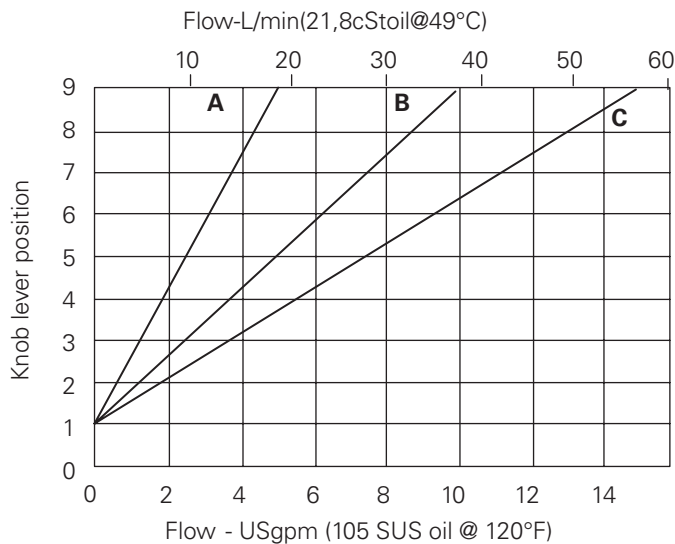
Description

This is a 2 way 2 position manually operated semi rotary restrictor screw in cartridge valve. This can be used in conjunction with a compensator to give an increase in flow in proportion to the movement of the lever.

Pressure Drop

Cartridge only

@ 5,5 bar (80 psi) pressure drop



Rated flow (See model code position 6)

A - 05

B - 10

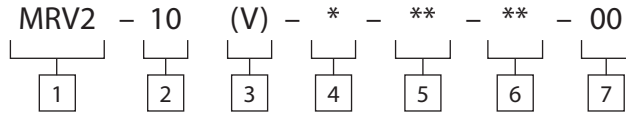
C - 15

MRV2-10 - Flow Restrictor Valve

Semi-rotary

Up to 57 L/min (15 USgpm) • 210 Bar (3000 psi)

Model Code



1 Function
MRV2 - Manual rotary valve

2 Size
10 - 10 size

3 Seal Material
Blank - Buna-N
V - Viton®

4 Adjustment
O - Cartridge only
B - Ball lever (friction lock)*
E - Ball lever (10 position detent)*
D - Lever (10 position detent)*
L - Lever (friction lock)*
K - Knob (non-locking)
*Light duty housings only

6 Max Flow Ranges
05 - 0-18,9 L/min (0-5 USgpm)
10 - 0-37,8 L/min (0-10 USgpm)
15 - 0-56,7 L/min (0-15 USgpm)

5 Port Size

Code	Port Size	Housing Number	
		Aluminium Light duty	Aluminium Fatigue rated
0	Cartridge only		
3B	3/8" BSPP	02-175462	-
6T	SAE 6	566151	-
2G	1/4" BSPP	-	876702
3G	3/8" BSPP	-	876703
6H	SAE 6	-	876700
8H	SAE 8	-	876701

See section J for housing details.

7 Special Features
00 - None
(Only required if valve has special features, omit if ("00")
SS - 316 Stainless Steel external components

Dimensions

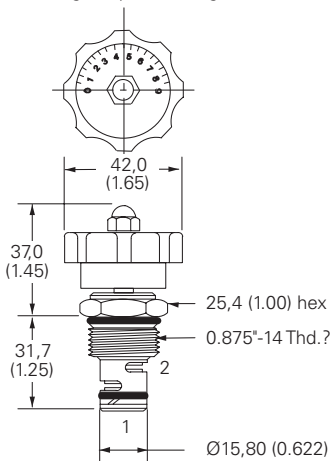
mm (inch)

Cartridge Only
Basic Code
MRV2-10

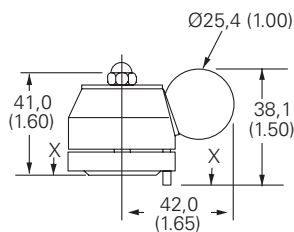
Torque cartridge in aluminum housing 47-54 Nm (35-50 ft lbs)

Installation Drawing

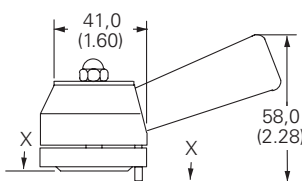
MRV2-10-K Knob Operated
Arrow can be re-located by slacking the plate. Re-tighten nut.



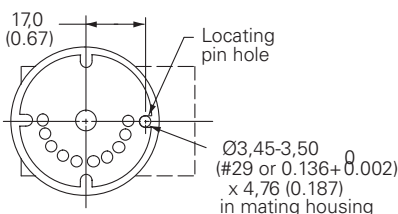
MRV2-10-B/E Models



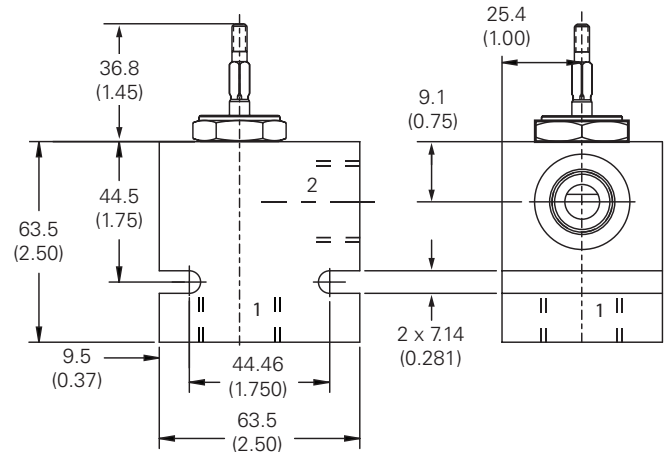
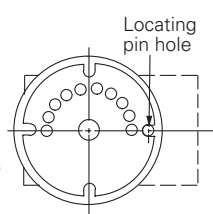
MRV2-10-D/L Models



MRV2-10-E/D Models



MRV2-10-B/L Models



WARNING
Aluminum housings can be used for pressures up to 210 bar (3000 psi). Steel housings must be used for operating pressures above 210 bar (3000 psi).